



11U Playbook



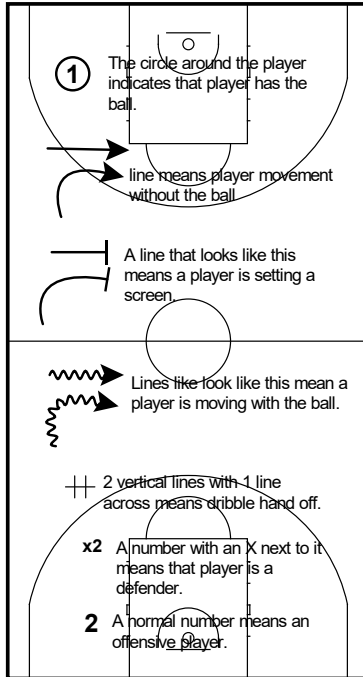
Table of Contents

1.	Team Game Plan	2
1.1	How to read a Playbook	2
1.2	50-Attack	3
1.3	ISO-Series	4
1.4	Sideline Attack	5
1.5	BLOB-1-2-3	6
1.6	Box	7

Team Game Plan

11U Playbook

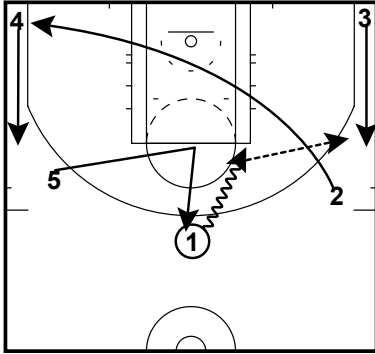
How to read a Playbook Man Offense



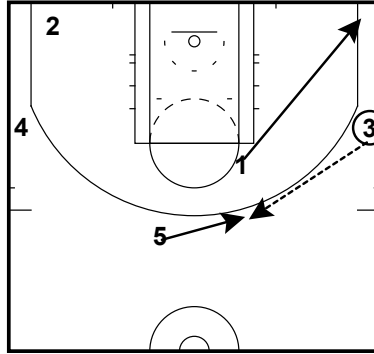
Team Game Plan

11U Playbook

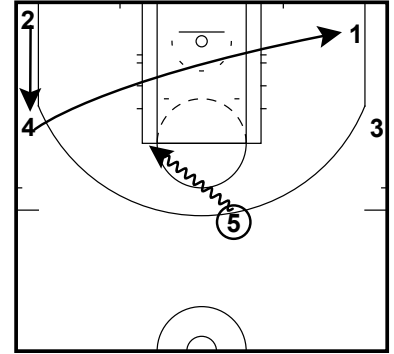
50-Attack
Man Offense



50-Attack
Man Offense



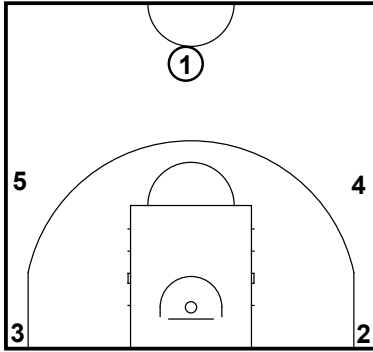
50-Attack
Man Offense



Team Game Plan

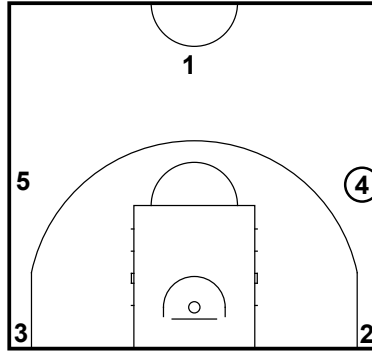
11U Playbook

ISO-Series
Man Offense



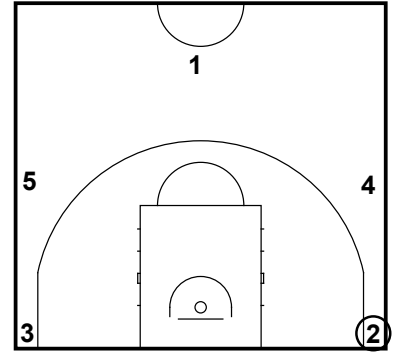
Top ISO is an isolation play from the top. The player with the ball should get a running start at defender.

ISO-Series
Man Offense



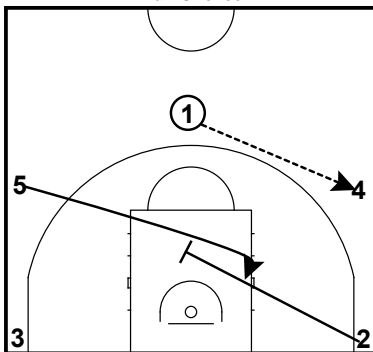
Side-ISO is an isolation play from the 45 degree angle.

ISO-Series
Man Offense



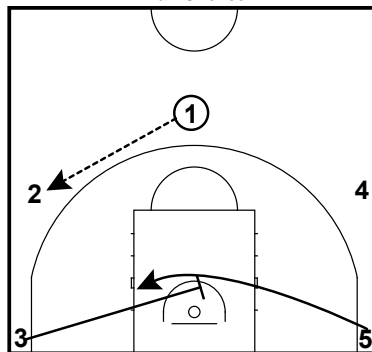
Corner-ISO is a isolation play from the Corner.

ISO-Series
Man Offense



Punch is a post isolation play on the right or left block.

ISO-Series
Man Offense

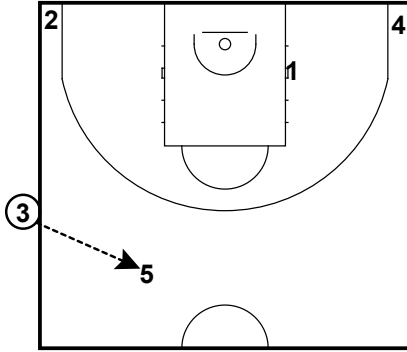


PUNCH from the corner

Team Game Plan

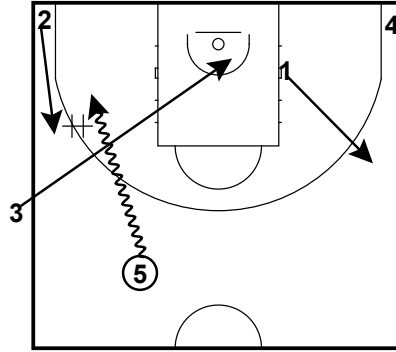
11U Playbook

Sideline Attack
Man Offense

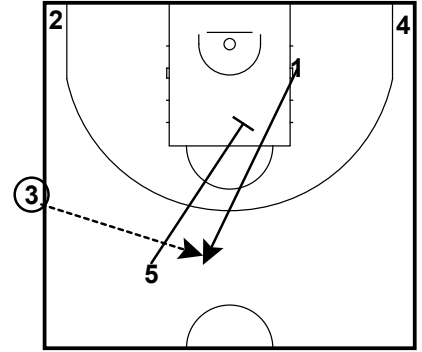


First look is to get the ball to 5 but if he is being pressured he can run Down or up screen action with 1.

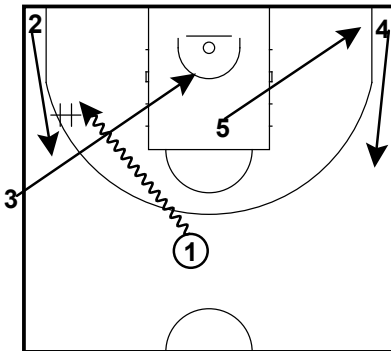
Sideline Attack
Man Offense



Sideline Attack
Man Offense



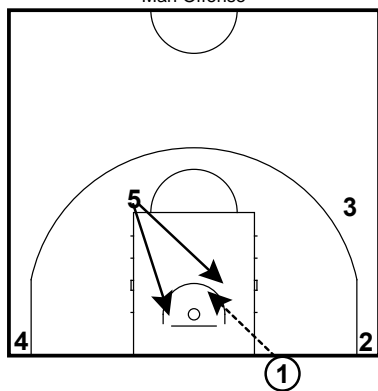
Sideline Attack
Man Offense



Team Game Plan

11U Playbook

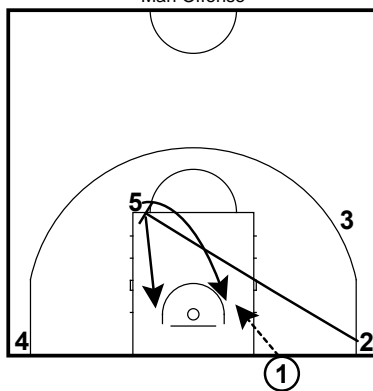
BLOB-1-2-3
Man Offense



One

Iso for the player with the biggest mismatch on the court. ISO player starts on weakside elbow.

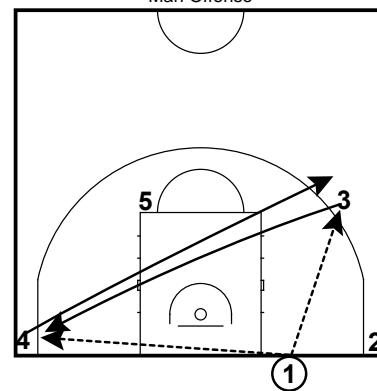
BLOB-1-2-3
Man Offense



Two

Option 2 is an UP-SCREEN with a cut to the basket by the screener.

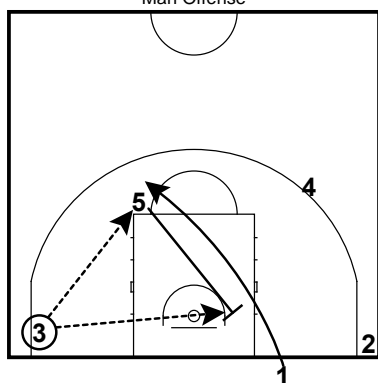
BLOB-1-2-3
Man Offense



Three (Part 1)

1 can pass to either player that is exchanging.

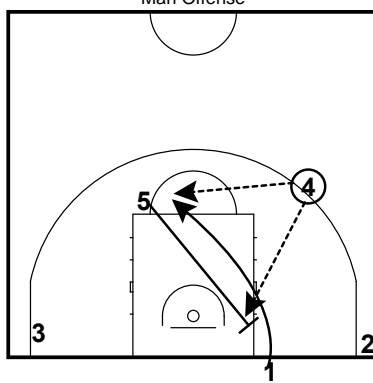
BLOB-1-2-3
Man Offense



Three (Part 2) (option 1)

If ball is passed to the baseline 5 will set a down screen on 1. and then he will seal and look for the ball.

BLOB-1-2-3
Man Offense

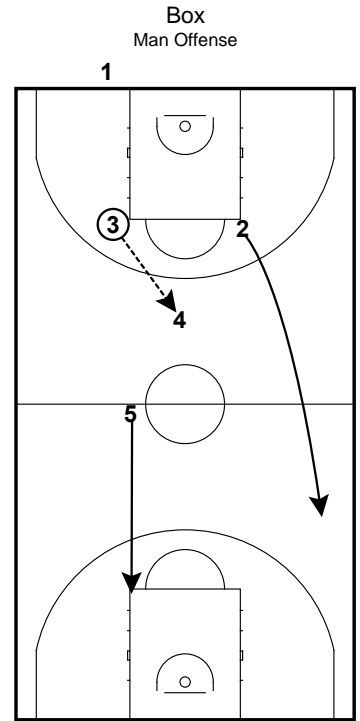
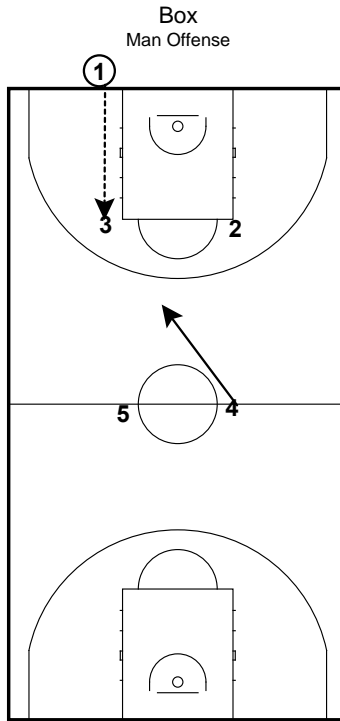
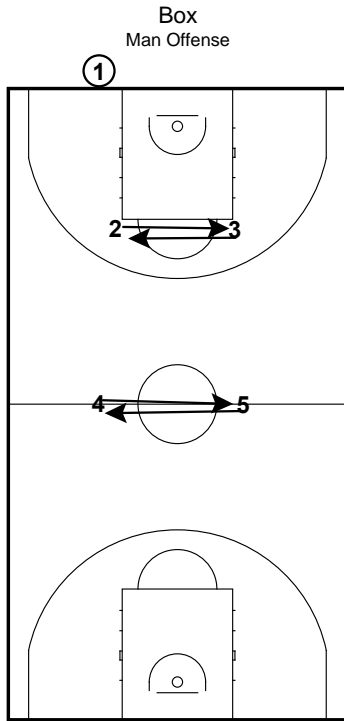


Three (Part 3) (option 2)

If ball is passed to the wing 5 will set a down screen on 1. and then he will seal and look for the ball.

Team Game Plan

11U Playbook



When the pass is entered the player opposite at the half court will move towards the ball.

